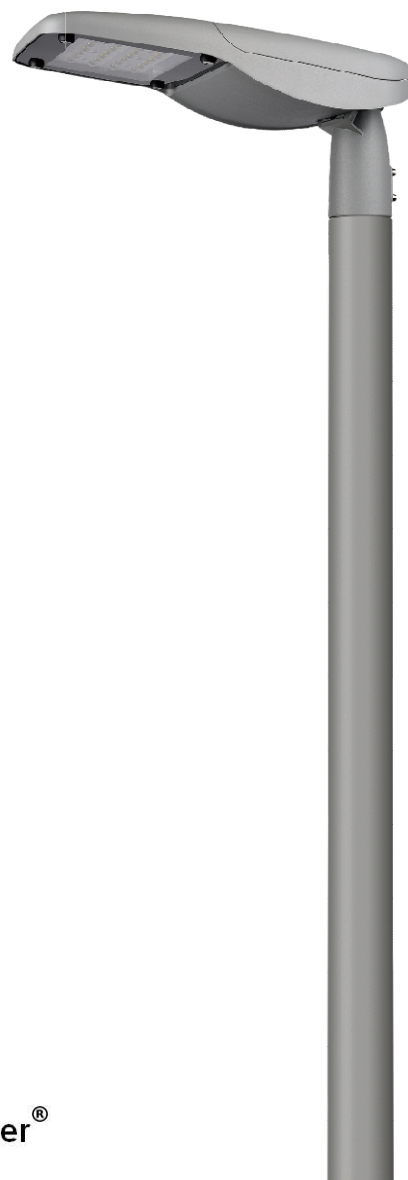
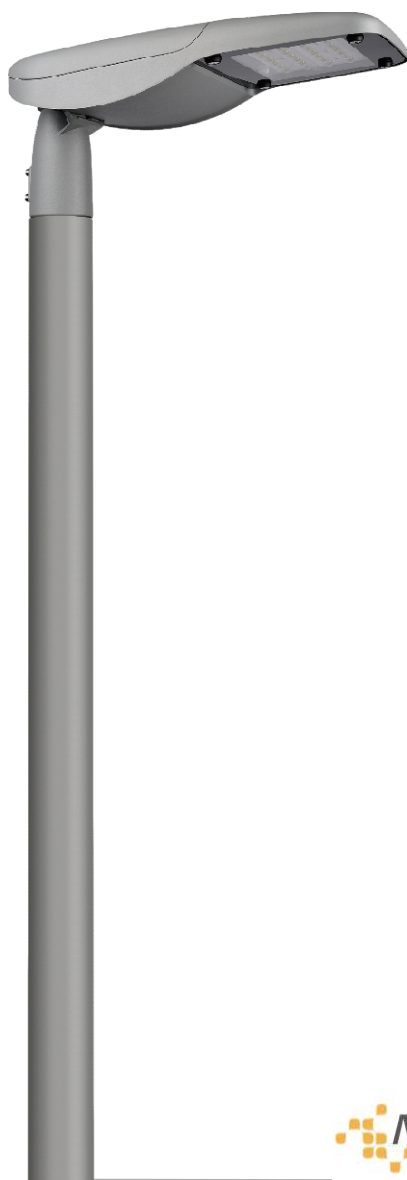
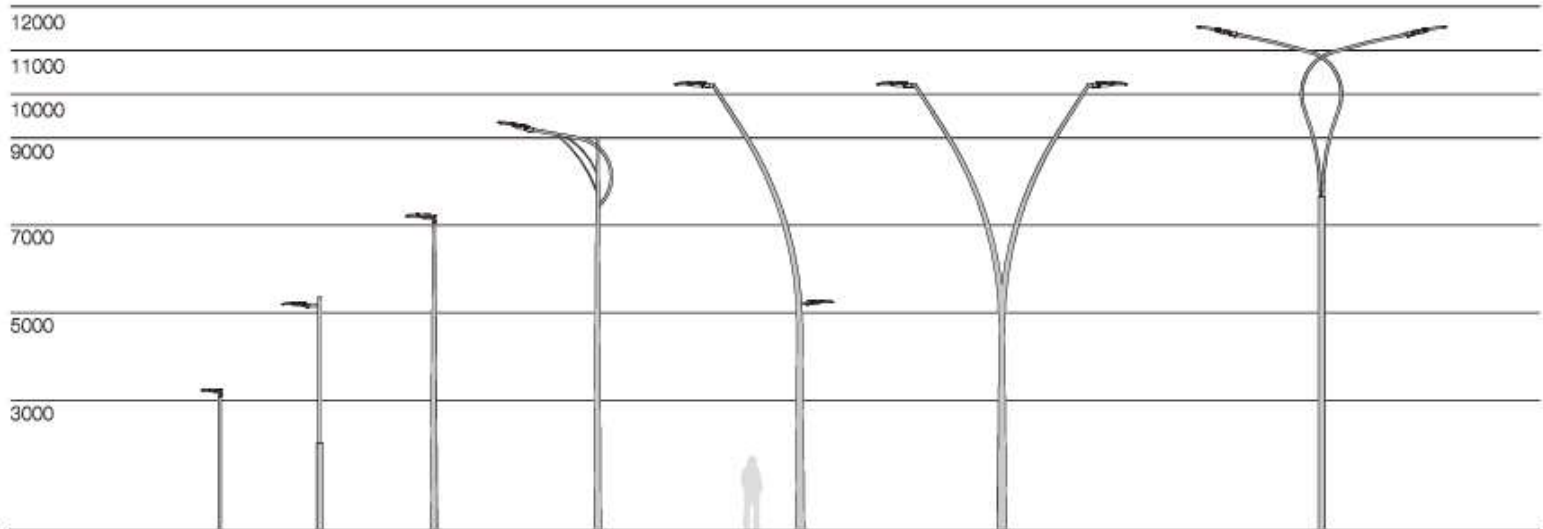


FILE LUMINARIE TAURO S





DESCRIPTION:

The **Tauro S** is a versatile roadway luminaire featuring cutting-edge, highly efficient LED technology, delivering significant savings in both energy and maintenance. Its compact, modern, and elegant design makes it ideal for a wide range of configurations.



- **Construction:** Pressure die-cast aluminum body with super-white tempered glass.
- **Optics:** PC lens technology providing high visual comfort and uniform light distribution.
- **Driver:** Philips Xitanium LP/FP – DALI – Factory pre-programmed.
- **Surge Protection:** Built-in protection against surges of up to **10kV**.
- **Maintenance:** Tool-free access via a push-button mechanism to open the device.
- **Installation:** Three mounting modes: vertical (post-top), horizontal (side-entry), and wall mount. Installation diameter: **Ø48 / Ø60mm**.
- **Finish:** UV-resistant and corrosion-resistant polyester powder coating.
- **Photobiological Safety:** Rated "No Risk" (free of hazards from infrared, blue light, and UV radiation) in accordance with the **EN 62471:2008** standard.
- **Hardware:** External screws made of **304 stainless steel**.

STANDARDS AND APPLICATIONS

- | | | |
|---------------------------|----------------------|------------------|
| • EN 60598-1:2015 | • EN 61000-3-3: 2013 | • EN 61547: 2009 |
| • EN 62493: 2010 | • EN 62262: 2002 | • EN 13032-4 |
| • EN 55015: 2013 | • EN 60598-2-3:2003 | • EN 62471: 2008 |
| • EN 50102:1995 + A1:1998 | • EN 61000-3-2: 2014 | • EN 61347-1 |
| • EN 61347-2-13 | | |

Specially efficient in:

- | | |
|---------------|---------------------|
| • Big avenues | • Comercial areas |
| • Streets | • Residential areas |
| • Roads | • Parking Lots |

CHARACTERISTICS

Electric Characteristics

- *Supply Voltage*..... 230 Vca
- *Supply Frequency*..... 47-63 Hz
- *Power Factor*.....>0,97
- *Electrical Class*..... Clase I / Clase II
- *Progammable Current*.....0,2 – 1 A
- *LF Output Current Ripple*.....<6%
- *Constant Light Output (CLO)*.....Activatable
- *Driver*..... Philips XitaniumOutdoorProg.
- *Power*.....<40W
- *Surge Protection*..... 6kV (driver) optional 10 kV
- *Thermal Protection*..... Driver auto protected
- *HF Output Current Ripple*.....<5%
- *Operating Temperature*..... -40°C a +55°C
- *Driver Diagnostics*..... Active
- *Driver Service Life*..... 100.000 hours
- *Current Dimming: Amplitude Modulation (Flicker-Free)*

Mechanical Charasteristics

- *Material*.... Corrosion-resistant aluminum alloy
- *Lenses*..... Polycarbonate / PMMA
- *Weight*.....4.8 kg
- *Color*.....RAL 9007
- *Diffuser*..... Flat tempered glass
- *Installation*..... up to 15° angle
- *Installation Diameter*..... Ø48/60 mm
- *Windage Area*..... 0,055 m²

Regulation and programming

- *Dimming*..... DALI
- *Standalone Programming*.....Up to 5 steps
- *Point to Point*..... Compatible
- *Mains Dimming*..... Optional (AmpDim)
- *Control Line*.....Optional
- *Bluetooth Control*..... Optional

Options

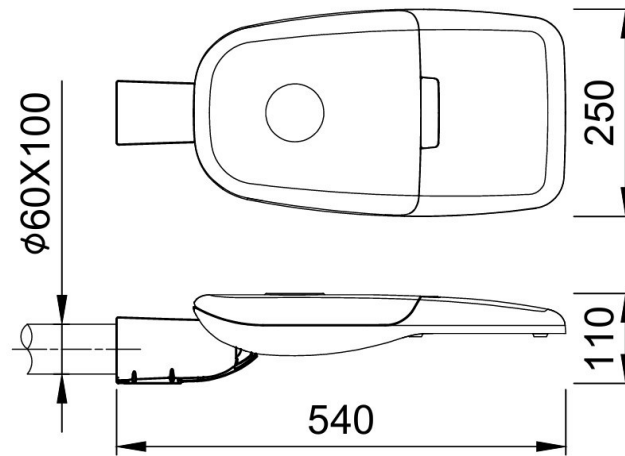
- *SRI*.....Yes
- *Surge Protection*.....Yes
- *Conector*.....Nema / Zhaga
- *Sensors*.....Yes

Lighting Characteristics

- *Light Source*..... Philips FastFlex LED
- *LED Count*.....16-24 LEDs
- *CRI*..... CRI >70 / CRI >80
- *Modularidad*.....Zhaga Book 15 Compatible
- *Protection*.....Yes
- *Lens Efficiency*..... >92%
- *Lumen Maintenance*.Constant Light Output (CLO)
- *Led Lifespan*..... >100.000 hours
- *LED Luminous Efficacy*.....208 lm/W
- *Color Temperature*.....2200K / 2700K / 3000K / 4000K / AMBER
- *Overheating Protection*>NTC 15 kOhm + 2000 Ohm
- *ULR*.....<0,1 %
- *Optical Distributions*.....>20

*For specific configurations or power levels consult with fabric.

DIMENSIONS



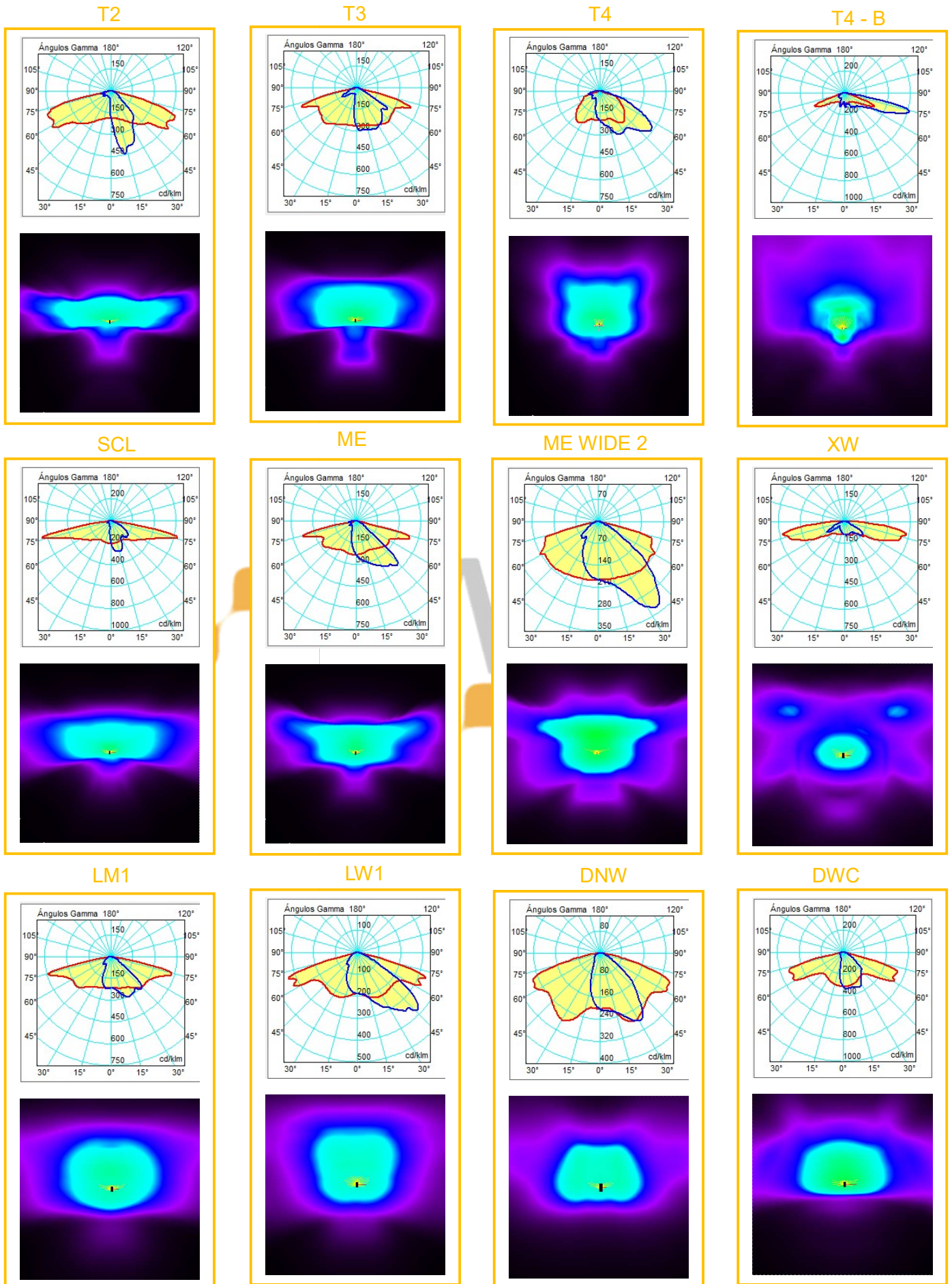
LIGHTING CONFIGURATION

	16 LEDS	24 LEDS
2200K	4960	7440
2700K	5080	7680
3000K	6080	9180
4000K	6080	9180
Power (W)	40	60
Efficiency (lm/W)	152	153

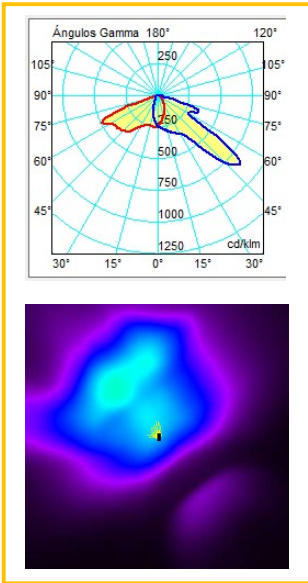
*The values presented in these tables are subject to slight variations, resulting from factors such as the optics used in the luminaire or its operating current.

**For other configurations or required power ratings, please consult the factory.

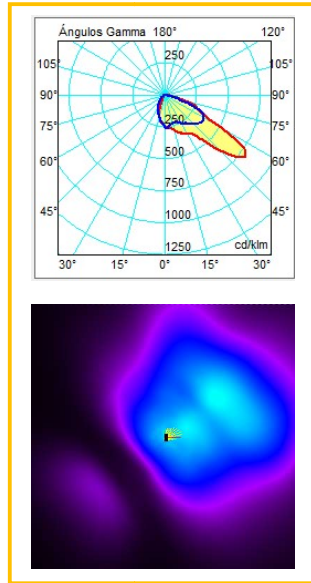
OPTICAL DISTRIBUTIONS



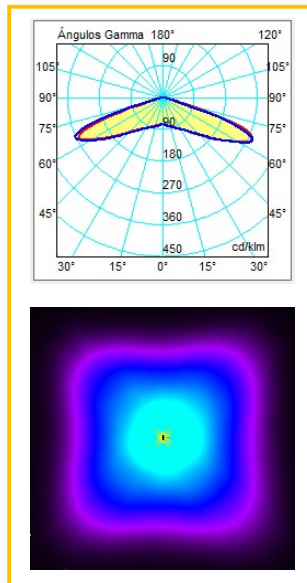
PX



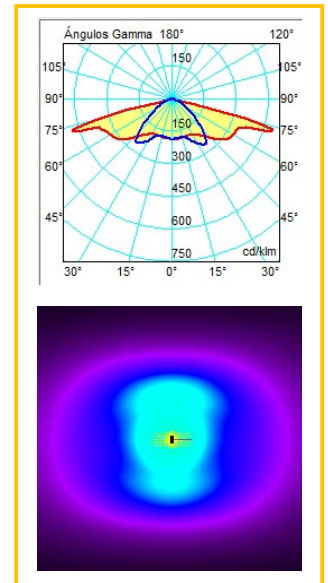
PXL



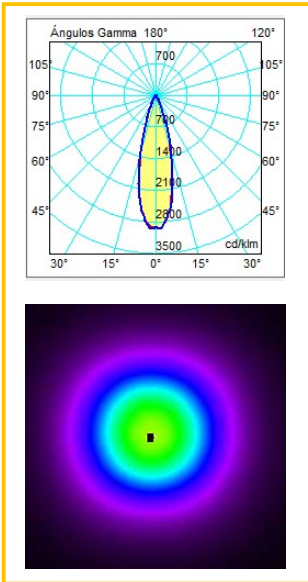
VSM



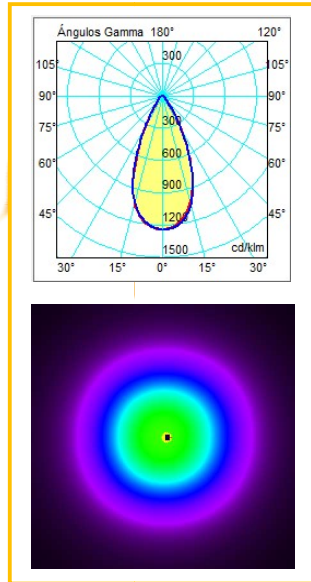
CAT



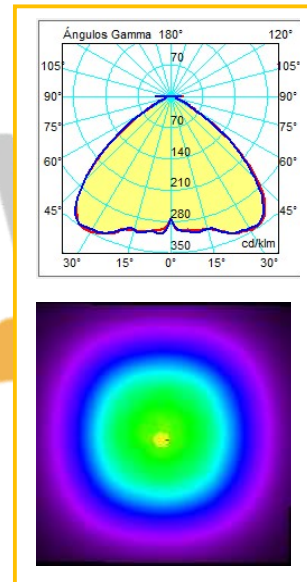
25°



50°



100°



FN

