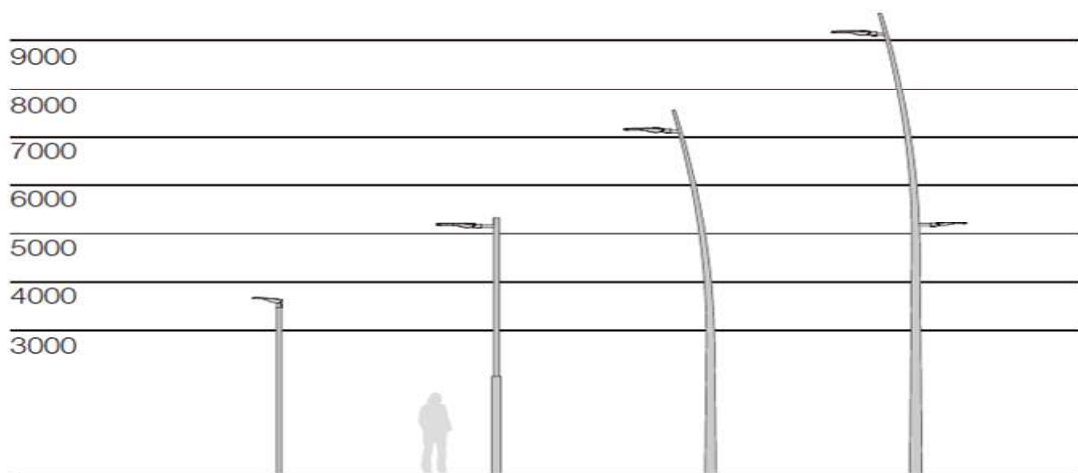


FILE LUMINARIE JOM S





DESCRIPTION:

A street luminaire with a refined aesthetic that blends harmoniously with the contemporary furniture of our cities: that is the **Jom S luminaire**.

Equipped with state-of-the-art LED technology, it offers a wide range of possibilities and complies with the most demanding technical standards. With high performance and maximum energy efficiency, this luminaire guarantees quality lighting and sustainability.



- **Housing:** Die-cast aluminum body with "super white" tempered glass.
- **Optics:** PC (polycarbonate) lens offering high visual comfort and uniform light distribution.
- **Driver:** Philips Xitanium LP/FP – DALI – Factory programmed.
- **Maintenance:** Downward-opening light cover with a specialized custom security screw.
- **Mounting:** Vertical and lateral (side-entry) mounting with adjustable tilt angle. Fits pole diameters: Ø48/60/76mm.
- **Finish:** UV-resistant and anti-corrosion polyester powder coating. Corrosion resistance exceeds 1,000 hours (salt spray test).
- **Photobiological Safety:** Exempt from photobiological risk (no infrared, blue light, or UV radiation hazards) in accordance with EN 62471:2008.
- **Smart City Ready:** Compatible with remote management systems.
- **Hardware:** Grade 304 stainless steel external screws.

STANDARDS AND APPLICATIONS

- | | | |
|---------------------------|----------------------|------------------|
| • EN 60598-1:2015 | • EN 61000-3-3: 2013 | • EN 61547: 2009 |
| • EN 62493: 2010 | • EN 62262: 2002 | • EN 13032-4 |
| • EN 55015: 2013 | • EN 60598-2-3:2003 | • EN 62471: 2008 |
| • EN 50102:1995 + A1:1998 | • EN 61000-3-2: 2014 | • EN 61347-1 |
| • EN 61347-2-13 | | |

Specially efficient in:

- | | |
|---------------|---------------------|
| • Big avenues | • Comercial areas |
| • Streets | • Residential areas |
| • Gardens | |

CHARACTERISTICS

Electric Characteristics

- *Supply Voltage*..... 230 Vca
- *Supply Frequency*..... 47-63 Hz
- *Power Factor*.....>0,97
- *Electrical Class*..... Clase I / Clase II
- *Progammable Current*.....0,2 – 1 A
- *LF Output Current Ripple*.....<4%
- *Constant Light Output (CLO)*.....Activatable
- *Driver*..... Philips XitaniumOutdoorProg.
- *Power*.....<40W
- *Surge Protection*..... 6kV (driver) optional 10 kV
- *Thermal Protection*..... Driver auto protected
- *HF Output Current Ripple*.....<4%
- *Operating Temperature*..... -40°C a +55°C
- *Driver Diagnostics*..... Active
- *Driver Service Life*..... 100.000 hours
- *Current Dimming: Amplitude Modulation (Flicker-Free)*

Mechanical Charasteristics

- *Material*.... Corrosion-resistant aluminum alloy
- *Lenses*..... Polycarbonate / PMMA
- *Weight*.....3.4 kg
- *Color*.....RAL 9007
- *Diffuser*..... Flat tempered glass
- *Installation*..... vertical - lateral
- *Installation Diameter*..... Ø48/60/76 mm
- *Windage Area*..... 0,057 m²

Regulation and programming

- *Dimming*..... 1-10 V/ DALI
- *Standalone Programming*.....Up to 5 steps
- *Point to Point*..... Compatible
- *Mains Dimming*..... Optional (AmpDim)
- *Control Line*.....Optional
- *Bluetooth Control*..... Optional

Options

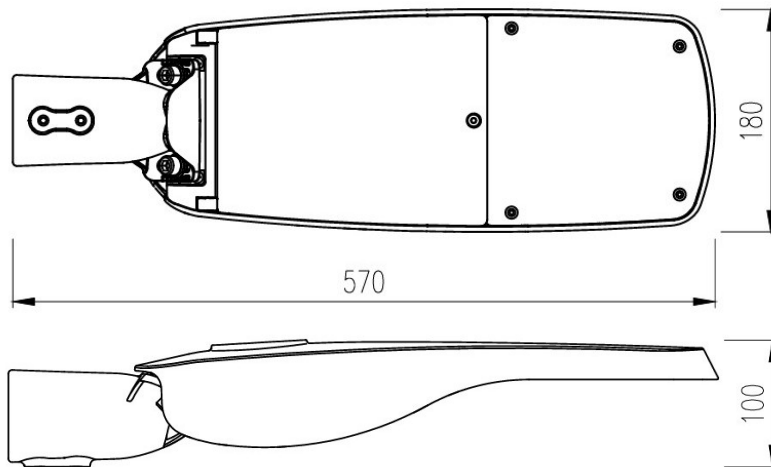
- *SRI*.....Yes
- *Surge Protection*.....Yes
- *Conector*.....Nema / Zhaga
- *Sensors*.....Yes

Lighting Characteristics

- *Light Source*..... Philips FastFlex LED
- *LED Count*.....4-8-16 LEDs
- *CRI*..... CRI >70 / CRI >80
- *Modularidad*.....Zhaga Book 15 Compatible
- *Protection*.....Yes
- *Lens Efficiency*..... >92%
- *Lumen Maintenance*.Constant Light Output (CLO)
- *Led Lifespan*..... >100.000 hours
- *LED Luminous Efficacy*.....208 lm/W
- *Color Temperature*.....2200K / 2700K / 3000K / 4000K / AMBER
- *Overheating Protection*>NTC 15 kOhm + 2000 Ohm
- *ULR*.....<0,1 %
- *Optical Distributions*.....>20

*For specific configurations or power levels consult with fabric.

DIMENSIONS



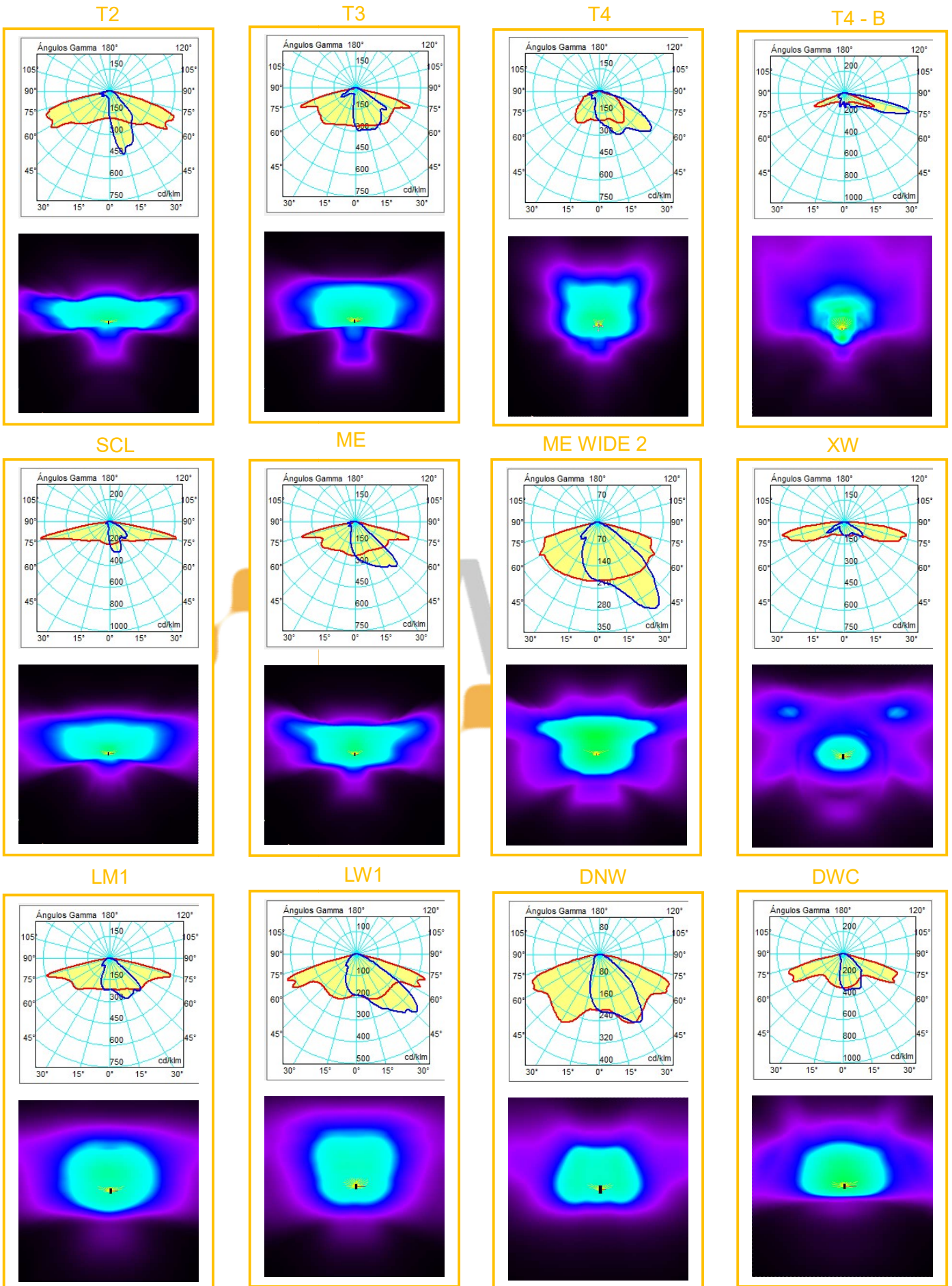
LIGHTING CONFIGURATION

	4 LEDS	8 LEDS	16 LEDS
2200K	1560	3078	4960
2700K	1605	3159	5080
3000K	1935	3780	6080
4000K	1935	3807	6080
Power (W)	15	27	40
Efficiency (lm/W)	129	141	152

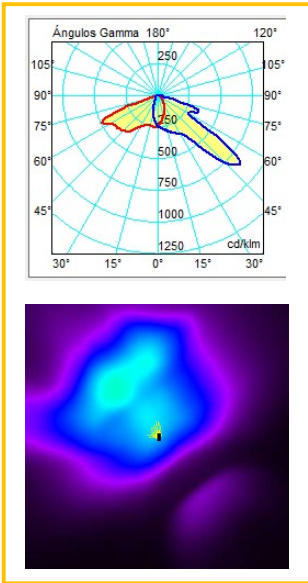
*The values presented in these tables are subject to slight variations, resulting from factors such as the optics used in the luminaire or its operating current.

**For other configurations or required power ratings, please consult the factory.

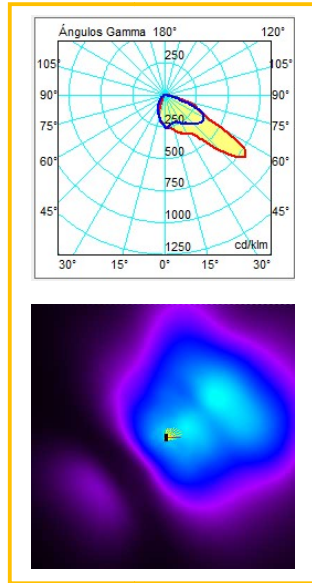
OPTICAL DISTRIBUTIONS



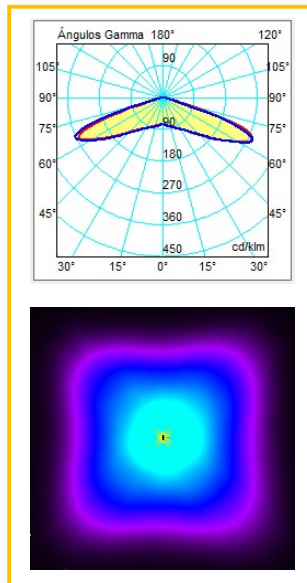
PX



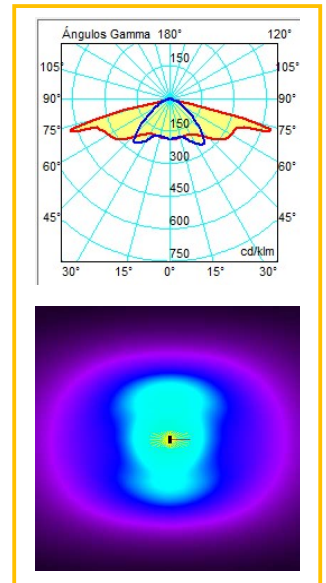
PXL



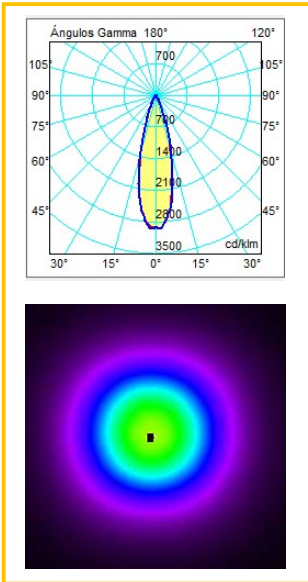
VSM



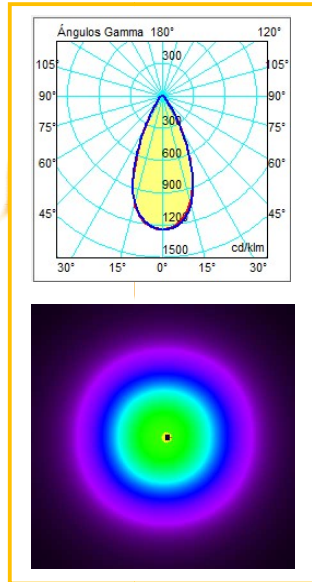
CAT



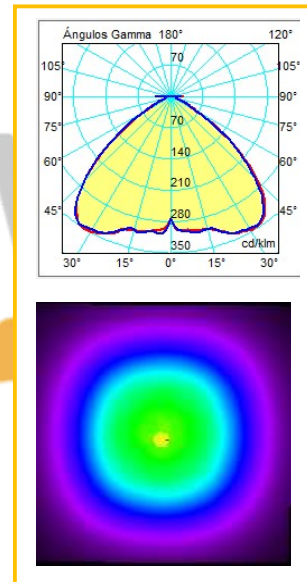
25°



50°



100°



FN

